

A LAPTOP, A LIFE A DECADE OF CHANGE



Rubitech

Created by

RubiTech Management team

A Two-Kilogram School In Every Hand

A rotating, sustainable model one laptop, a decade of opportunity.



A Story That Happens Every Day.

A Way That Never Existed Before.

In a rural classroom with **no technology**, a RubiTech ambassador arrived with **five laptops** for thirty students.

The **most talented** student was chosen.

A student who had never touched a **keyboard** ended the year writing their **first lines of code**.

The laptop moved on to the next **deserving student**. But for that student, **a new world had already begun**.

CONTENT

01	Vision & Mission	04
02	The Problem	06
04	The Ecosystem	08
06	Student journey	11
07	Donation journey	13
08	The Ambassador Network	14
09	The Economics & ROI	17
11	Impact & ROI Framework	19
11	Partners & Collaborators	20
12	Roadmap	22
14	Get Involved	24
15	Contact Us	25

SECTION ONE

Vision & Mission



What RubiTech Stands For.



Equal Access Fuels Equal Potential

No future should be limited by the **absence of a laptop.**



Technology as an Equalizer

Computing today is what **books were yesterday.**



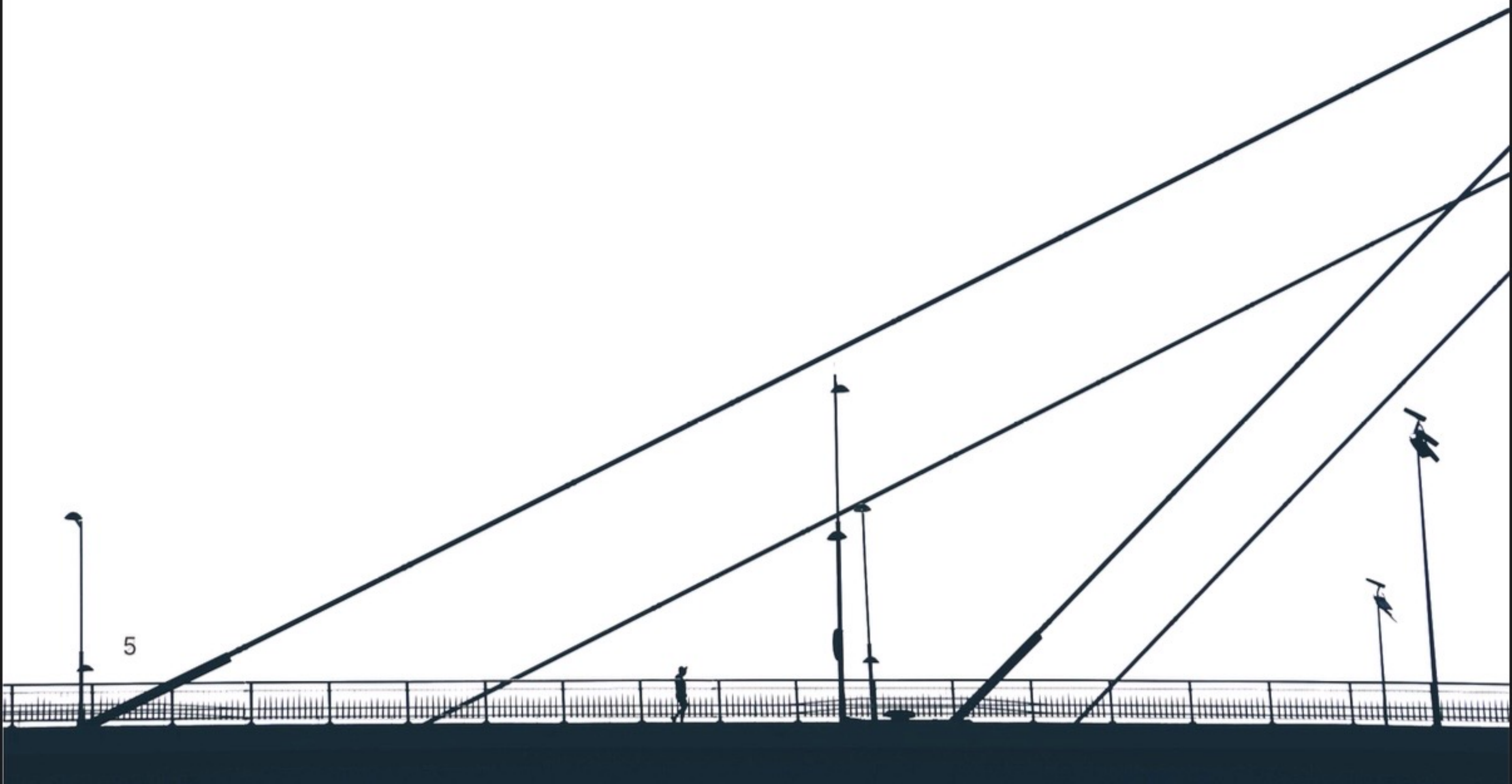
Liquid Infrastructure

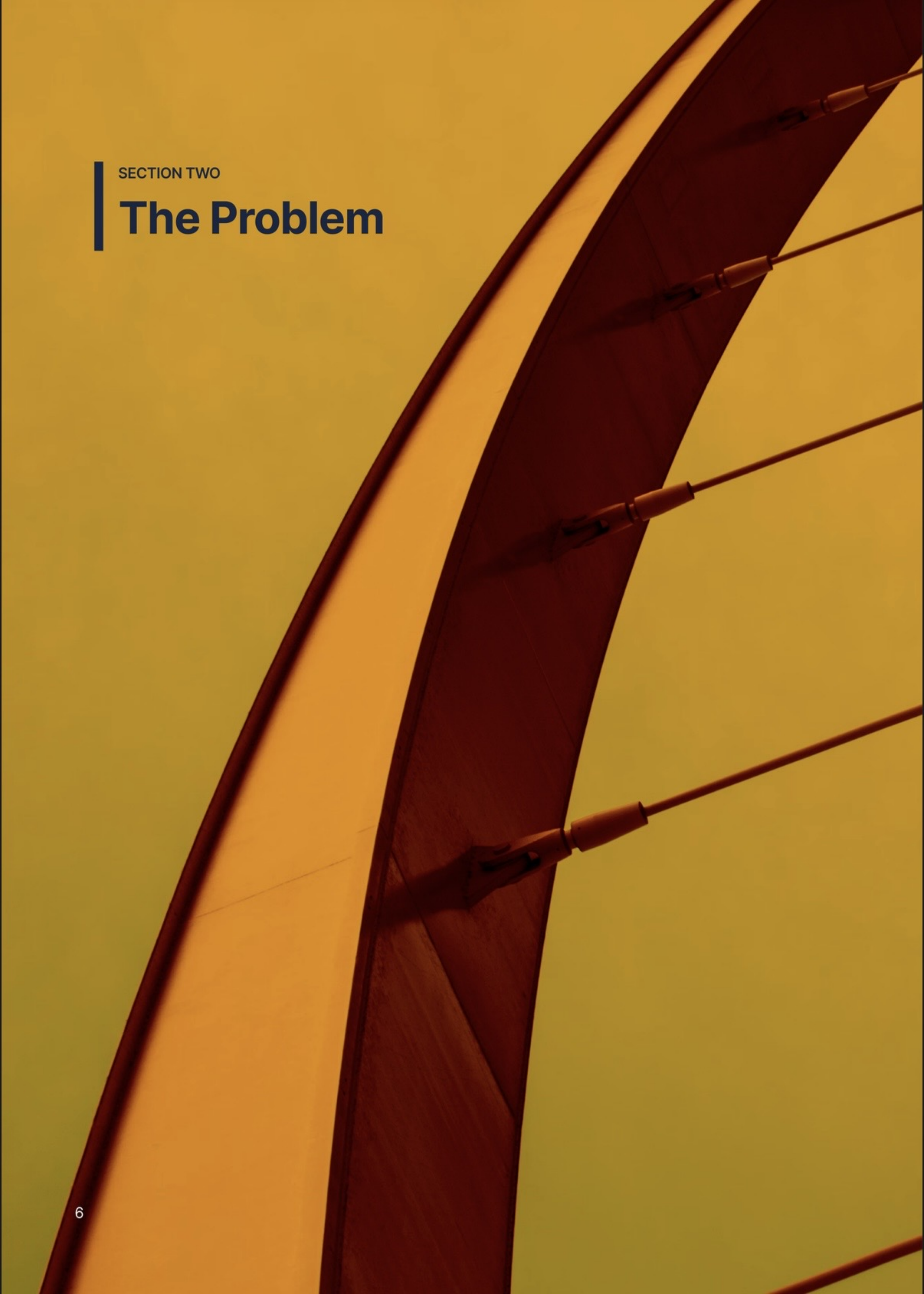
Infrastructure shouldn't be **frozen in place.** Ours moves with the student.



Local Trust

Our ambassadors don't just deliver laptops. **They're trusted by the community.**





SECTION TWO

The Problem



Geographically Locked

In many rural areas, families rarely move beyond 50 km — meaning the digital world is invisible simply because no one has shown the way.

No Device, No Entry

A laptop isn't a luxury. **It's the entry ticket to the digital economy.** Without it, the door stays shut.



Frozen Infrastructure

Schools are expensive, limited and fixed. **Talent is not.** Static systems can't reach **moving potential.**

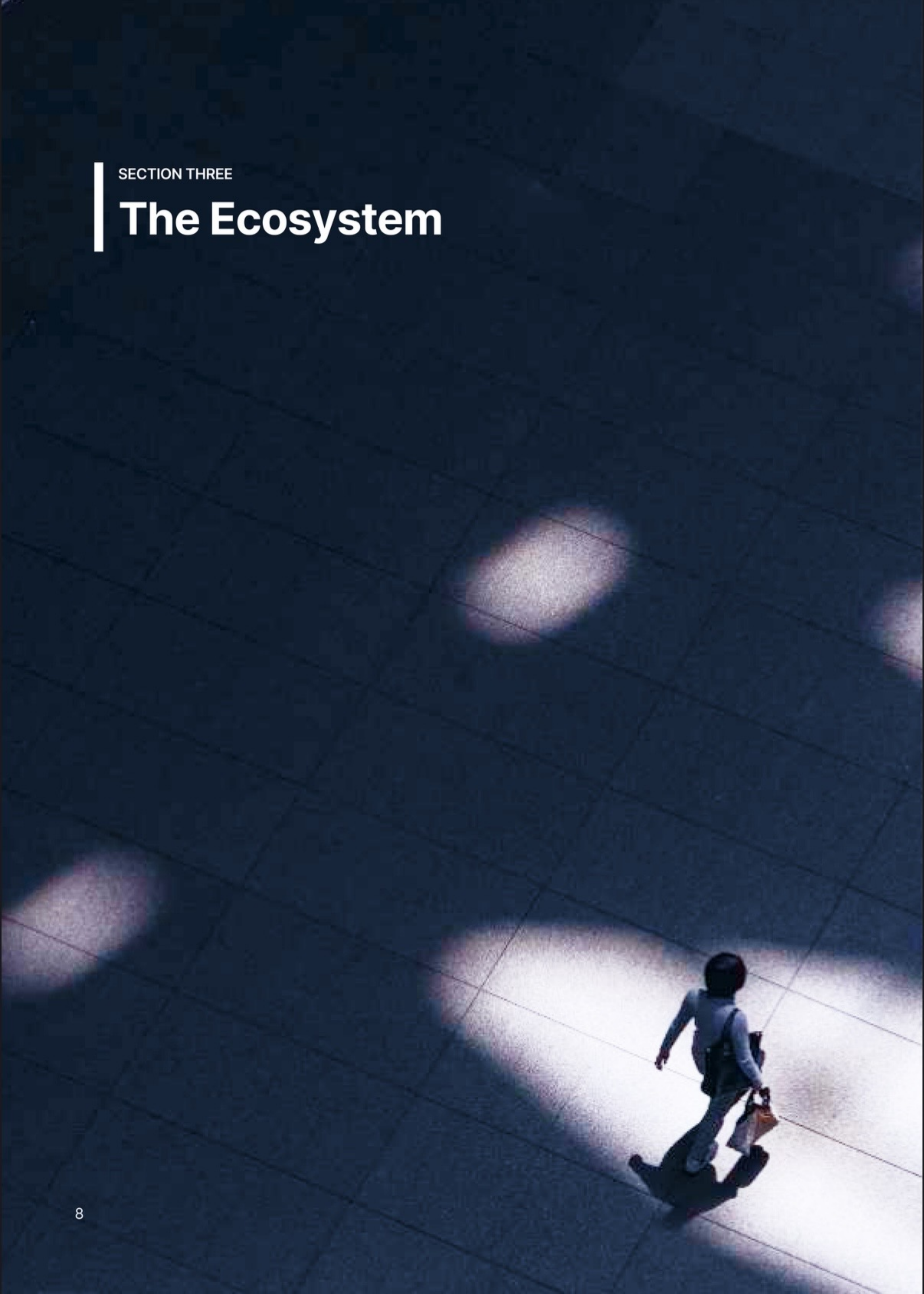
Cultural Diversity

Platforms alone can't bridge the gap. **Local trust, language,** and **community ties** are essential to make technology actually land where it matters.



SECTION THREE

The Ecosystem



Three Gears.

One Purpose. A Connected System Where Each Actor Drives The Others Forward.

STUDENTS *The Potential*

Talented adolescents in underserved regions of Iran.
Apply online → matched with a nearby ambassador → laptop delivered for one full academic year → progress monitored regularly.



DONORS *The Power*

Diaspora Iranians, individuals, and organizations.
Contribute \$200+ → name their device → write a personal message → access a live **dashboard** showing usage, progress, and impact → choose **reporting** frequency.

AMBASSADORS *The Operators*

Trusted educators and community leaders.
Volunteer-driven. **Zero salary cost.**
Screened and committed → manage 3–5 laptops → oversee usage and engagement → collect documents and support the learning journey.

SECTION FOUR

The Journey



STUDENT JOURNEY

A **clear path** from **discovery** of the program through a full academic year of guided learning to **measurable outcomes** based on performance.

01 Discovery & Application

Students find RubiTech **online** or through peers and apply with **basic info**.
The platform checks for a **nearby ambassador**.



02 Ambassador Matching

if one exists, the student is **connected automatically**.
If not, they **nominate** a trusted local educator to be vetted.



03 Selection

Ambassadors choose 3–5 **high-potential, motivated** students with **commitment letters** and **parental ID** for safeguards.

04 Laptop Distribution

Pre-configured **Lenovo T-series** laptops are shipped.
Each device is registered to its student, who receives their dashboard and learning plan.



05 Educational Year

The student follows a **structured path** from computer literacy to programming, software development, and AI tools with automatic usage tracking, periodic assessments, and an aspirational effect on the **35–40** peers who observe and re-apply.



CONTINUED

Personalized Growth For Every Student

01

Champions

High engagement and course completion. Students keep their laptops and join RubiKamp, Iran's leading youth technology and entrepreneurship program.

Top Performers

Mid Performers

Low Performers

02

Financial Movers

Moderate progress and engagement. Students are introduced to BNPL partners. RubiTech history serves as a credit reference for their first device purchase.

03

Asset Recovery

Incomplete paths or low usage lead to device retrieval. Laptops re-enter the rotation fully refurbished for the next cohort.

Placing 5 laptops in a class of 40 creates 35 inspired observers. This indirect aspiration effect is tracked and measurable.

DONATION JOURNEY

A single **\$200** donation does not fund one laptop for one year. It funds a **decade of education** for ten students with full transparency at every step.

01 Donation Made Any time

A donor contributes through the **platform**; gifts above **\$200** can **name the laptop** and include a **message**, with visibility set to public, private, or anonymous.



02 Annual Purchase Cycle May - June



All accumulated donations fund the **yearly** purchase of refurbished laptops, while contributions after June roll into the **next year**.

03 Preparation & Shipment June-July

Laptops are refurbished, standardized (**Lenovo T-Series**), pre Configured, repaired if needed, and shipped to ambassadors.



04 Live Tracking From August



The donor dashboard activates, showing the ambassador, the student using the laptop, **live stats**, and the **laptop's persistent identity** across its lifetime.

05 Annual Report & Renewal Every Year · 10 Years

Each year, the donor receives an **impact report** as the laptop moves to a **new student**, building **ten years of cumulative education hours**, students served, and **measurable** outcomes from a single **\$200 donation**.



SECTION FIVE

The Ambassador Network



Turning One Teacher Into A Scalable Learning Engine

Cultural Bridge

Trusted local figures enable adoption, removing social and institutional resistance at the last mile.

Operational Leverage

Ambassadors manage 3–5 laptops each, unpaid allowing RubiTech to scale to thousands of students without increasing headcount.

Influence Multiplier

A few equipped students inspire entire classrooms, driving organic demand and future participation.

Performance-Based Scaling

Ambassadors are measured on engagement, outcomes, and device upkeep; top performers scale up, underperformers are reduced or removed.

Who Qualifies to Become an Ambassador?

Teachers, principals, NGO workers, librarians, and trusted community leaders.

Why Collaborate with RubiTech?

Because we share a mission to expand opportunity and create meaningful educational impact.

What Assurances Are Provided?

Ambassadors are fully verified and onboarded through formal legal procedures.

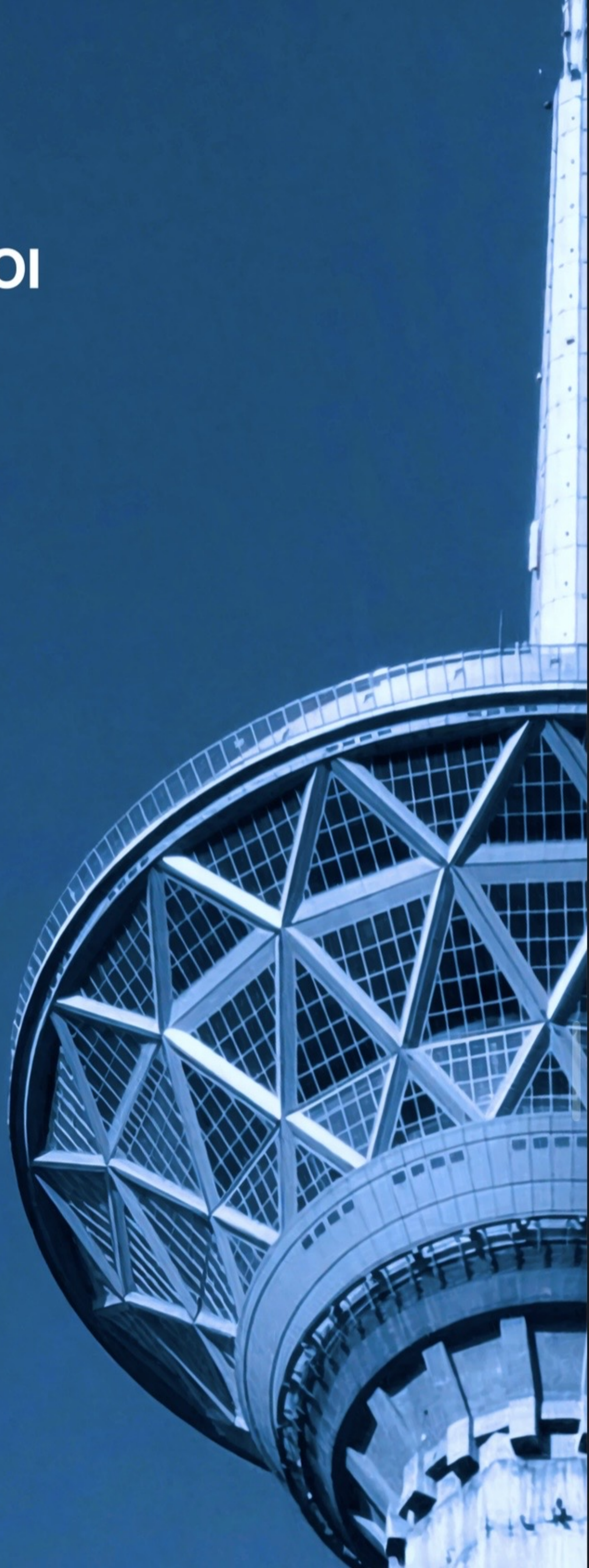


TRUST EARNED, NOT ASSUMED.

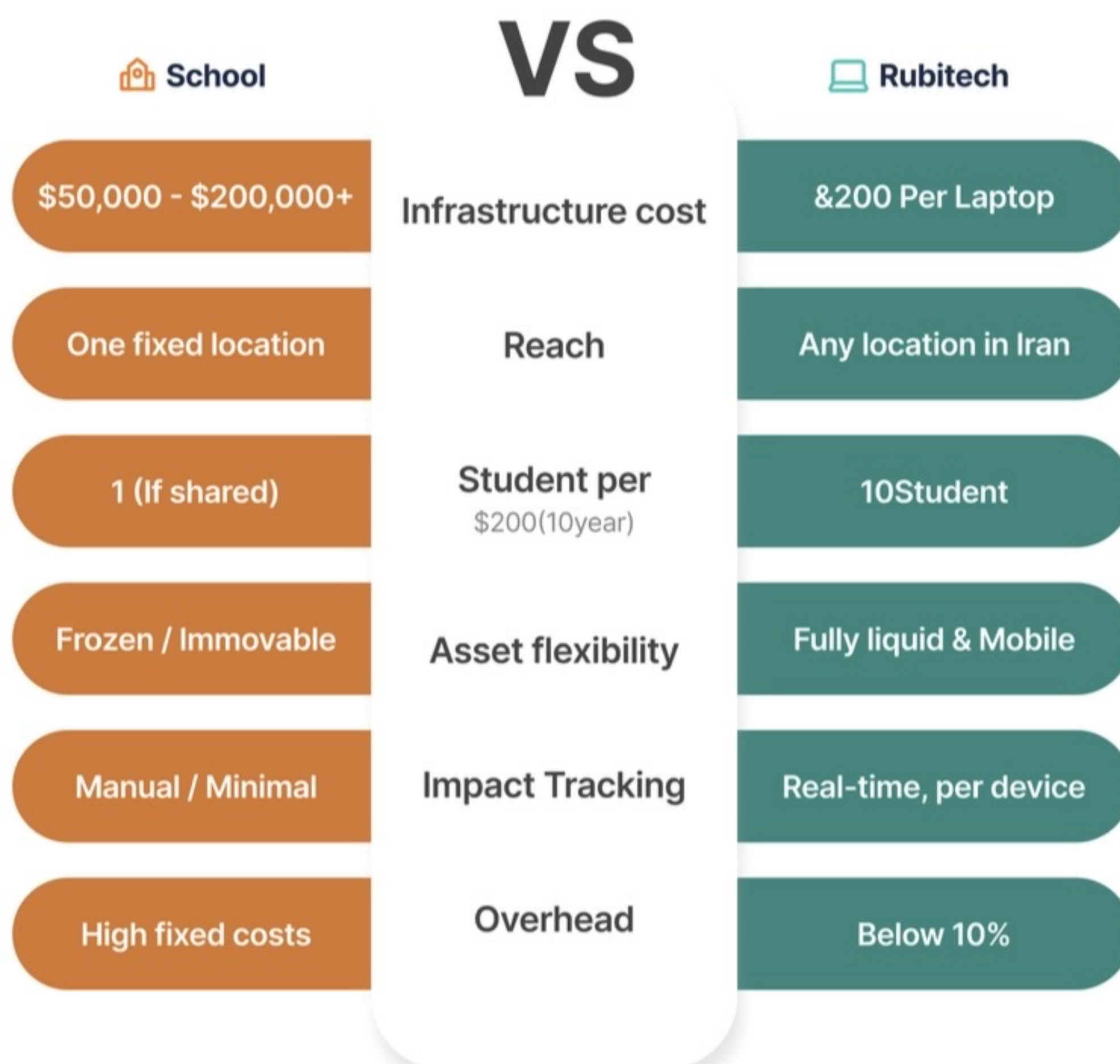
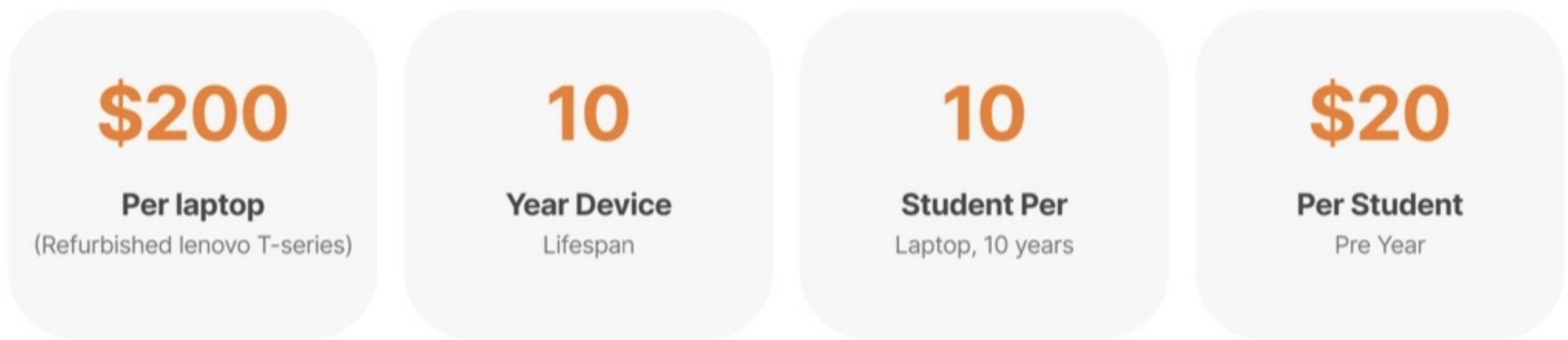


SECTION SIX

Economics & ROI



Maximum Impact, Minimal Cost.



\$20

Per student per year, the most efficient education investment available.

10-30x cheaper per student than formal secondary education infrastructure, while reaching students formal systems cannot serve.

We Measure Everything Immediately And Long-Term.

YEAR 0-2

Immediate Educational Output

- Hours of laptop usage per device per year
- Courses completed on maktabkhaneh per studnet
- Assesment pass rates across studnet cohort
- Geographic distribution across provinces
- Indirect aspiration effect
- (~35 studnet per class)

YEAR 3-5

Medium Term Economic Mobility

- University admission rates among alumni
- Employment in technology-related roles
- RubiKamp scholarship recipients and careers
- BNPL self-purchase uptake
- Alumni becoming ambassadors in their communities

YEAR 5-10

Long Term Social Impact

- Salary vs. Regional baseline (alumni vs. Control)
- Underage marriage rate in served communities
- Crime rate comparison : Program vs. Control areas
- Startups and ventures launched by alumni



Rubitech

SECTION SEVEN

Partners & Collaborators



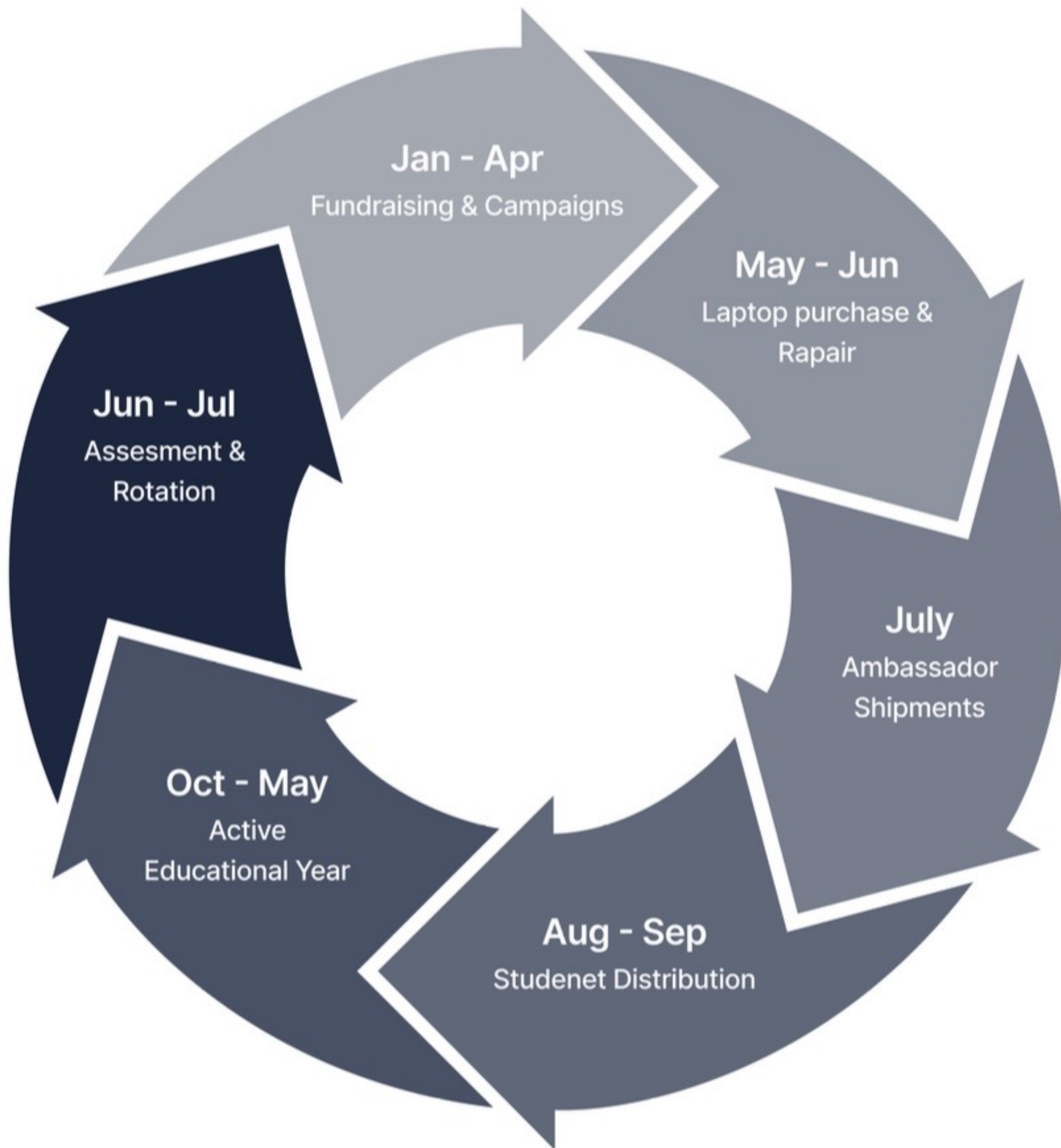
End-To-End Ecosystem For Scalable Education



RubiKamp - The Ultimate Destination

.For the **highest-performing** students, RubiTech is not the **end of the journey**, it is the beginning
The top tier earns a **RubiKamp scholarship** and **keep the laptop** to continue into **entrepreneurship** and
professional technology skills.

Annual Operating Cycle



**10,000 laptop in active circulation. 10,000 studnets empowered annually.
+400,000 indirectly influenced each year. A generation of innovators
shaped by access, not privilege**

From 200 Laptop To 10,000.



Laptops : **5,000** Studnets : **10,000 per year**
Ambassadors : **+1,000** Provinces : **All 31**
Platform : **V2 Full** Social Impact : **Measured**

2028-29

NATIONAL



Laptops : **200** Studnets : **200**
Ambassadors : **-** Provinces : **-**
Donors : **Pre-Committed** Platform : **Pre-committed**

Aug 2026

LAUNCH



Laptops : **10,000** Studnets : **+10,000**
Influenced : **+40,000** ROI : **Published**
Salary Data : **Published** Donor Model : **Fully Active**

+ 2030

FULL SCALE



Laptops : **1,000** Studnets : **+1,000**
Ambassadors : **40-65** Provinces : **+10**
BNPL +AI : **Active** RubiHacks : **Active**

2027

SCALE



GET INVOLVEDEE

Every Role Matters. Find Yours.

FOR STUDENTS

Apply for a laptop

Are you a motivated adolescent in Iran who wants to learn technology but doesn't have a device? Register your interest. We'll connect you with the nearest ambassador or help establish one in your community.

FOR AMBASSADORS

Join the network

Are you teacher, school principal, social activist, or educational NGO worker with access to talented adolescents? Apply to become an ambassador and receive 3-5 laptops to manage and mentor in your community.

FOR DONORS

Name a laptop

A \$200 donation funds a decade of education for ten students. Name your laptop, write a message, and watch your impact grow in real time. Diaspora donations are OFAC-compliantly processed.

FOR COLLABORATORS

Partner with Us

Content providers, hardware vendors, AI companies, BNPL platforms, repair networks, influencers, and corporate partners. RubiTech is building a robust collaborator ecosystem. Let's design your role together.

CONTACT US



Dr. Saeed Hosseinzadeh

Founder & Managing Director, RubiKamp. Cornell University

Linkedin [Saeed Hosseinzadeh](#)

Email sh2387@cornell.edu



Mozhde Mohammadi

Product Manager

Linkedin [Mozhde Mohammadi](#)

Email Mojdemhmdi@gmail.com



Hasti Taati

RubiTech Lead

Linkedin [Hasti Taati](#)

Email hastitaatii@gmail.com

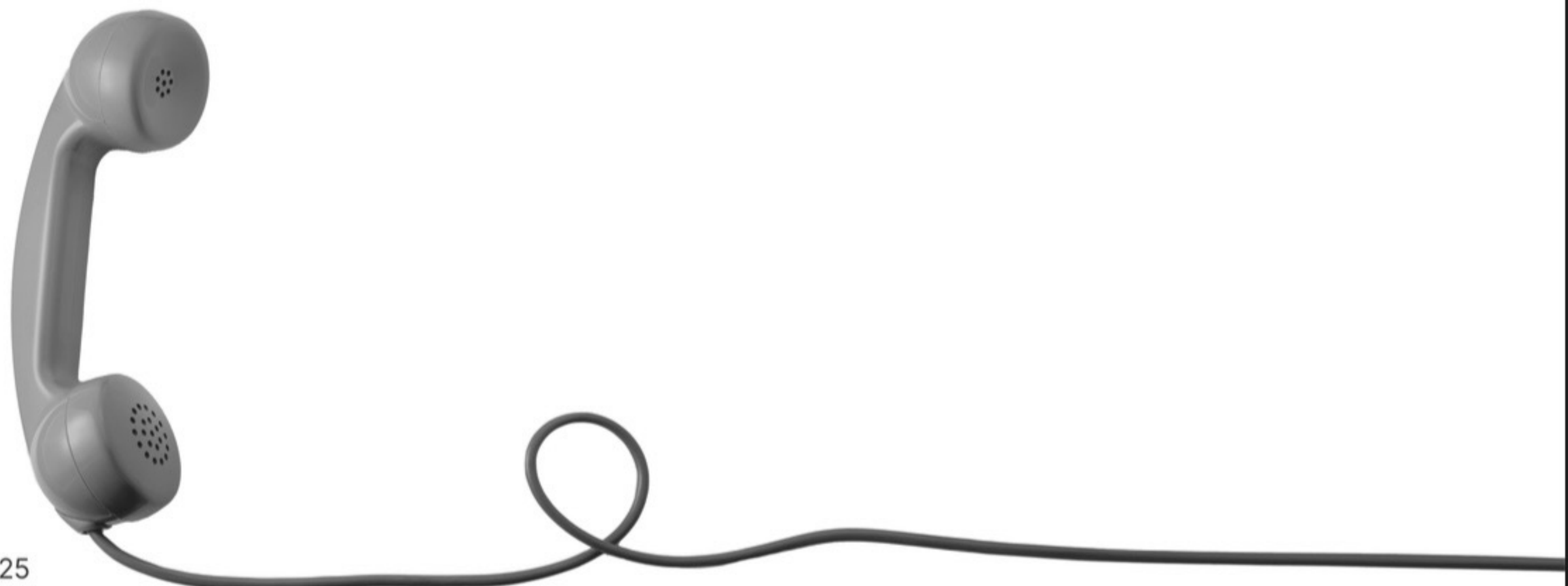


Armine Nematzadeh

Product Designer

Linkedin [Armine Nematzadeh](#)

Email nmzarmine@gmail.com





Rubitech